

PRELIMINARY VERSION !
(will be corrected)

DESIGN CENTRE PROFILE



LINE Division

Design Centre,
Nábřežní 23, 741 01 Nový Jičín,
Czech republic

Tel.: +420 556 70 45 67

Fax: +420 556 70 16 70

E-mail: konstrukce@dytron.cz

<http://konstrukce.dytron.cz>

DESIGN OFFICE DYTRON (LINE DIVISION)

The Design Office activity mainly covers performance of design works for the general customer, followed by assistance to the clients who are learning to use the software CATIA, which means in practice helping to implement design tasks of the customer (user of CATIA software) under advantageous price conditions. Moreover, the Office also organises production (via cooperation) of the products which were designed by us.



Current Situation

The gradual increase of a number of staff has led to the expansion of our premises and in 2003 a new independent building - Design Centre in Nábřežní Street in Nový Jičín was allocated for our Design Office. All offices are equipped with the state-of-art technology. At the moment, 28 people work in the LINE Division, which is more than 2/5 of all staff of our company.

International Collaboration

Apart from the collaboration with a lot of Czech firms, the company DYTRON s.r.o. is performing design works for well-established foreign companies while sharing the projects for end customers, such as VW, DAIMLER-CHRYSLER, AUDI, BMW, JAGUAR, TOYOTA, VOLVO, PORSCHE...

THE OFFICE STAFF

Office Manager: ing. Petr Kunčák
Technology: ing. Jaroslav Bukovský
 Jaromír Polách

Office assistants: Pavlína Šimíčková
 Anežka Bambuchová

Designers:

- Project managers
- Designers
- Staff for development of drawings (TVD)



Expertise and skills of designers:

Project managers:

Minimum practice in design 10 years, independent creative activity, independent task management, minimum practice with CATIA system 5 years (SOL, SUR, DRAFT, translation of data, data transfer...), communication in German or English languages,

Designer:

Minimum practice in design practice 4 years, independent creative activity, minimum practice with CATIA system 3 years (SOL, SUP, DRAFT...), partial communication in German or English language,

TVD staff:

Practice in the area of drawing documentation, minimum practice with CATIA system 1 year, basic knowledge of German or English language.

Certificates of quality:
 Line Division has been certified against **ISO 9001:2000.**



THE OFFICE SOFTWARE

The following software programmes are available:
 CATIA V4 up to 2.4 release - modules for creation of areas, solids, drawings, kinematics and NC programmes
 CATIA V5 - always updated release
 IGES for transfer of data to other CAD systems
 CATVDA Translator for transfer to other CAD systems



THE OFFICE HARDWARE

The firm DYTRON s.r.o. has been using RISC work stations of IBM, Silicon Graphics, SUN Microsystems and Hewlett Packard determined for work with CATIA V4, and the work stations on the basis of PCs of IBM, Hewlett Packard for work with CATIA V5. All computers are interconnected in the heterogeneous network LAN with 3 servers, in which back up of data is organised.

Types of work stations:

RISC: IBM RS6000 workstation 43P-140,
 IBM RS6000 workstation 44P-170,
 Silicon Graphics system 02 R10000,
 Silicon Graphics system Octane R10000,
 Silicon Graphics system Octane R12000,
 SUN Microsystems Ultra 10,
 HP RISC C3600, B2600,

PC: IBM Intellistation,
 HP Visualize P-Class,

Output equipment: coloured printers and plotters of various formats up to the size of A0+,

Back-up equipment: 4mm DAT tape mechanics with carousel cartridge, , DVD+RW back up unit,

Data transfer: ISDN line with the system Odette,
 Internet connection via microwave connection of the capacity of line 512kB (FTP, e-mail).

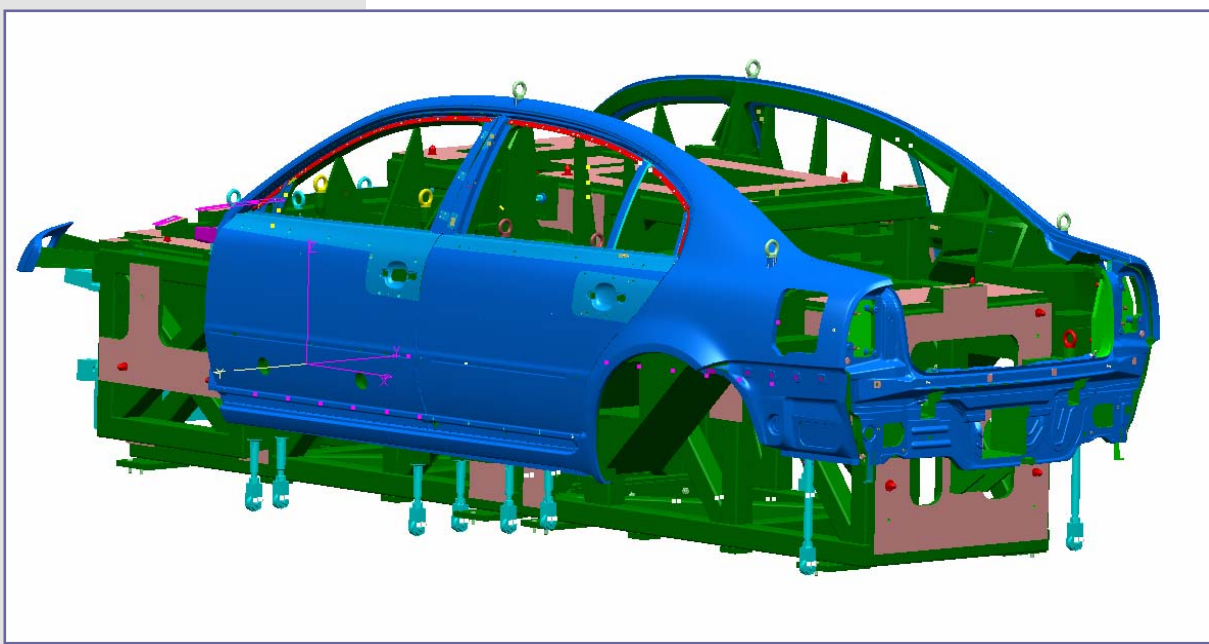


TYPES OF DESIGN ACTIVITIES

Measuring and check fixtures and equipment:

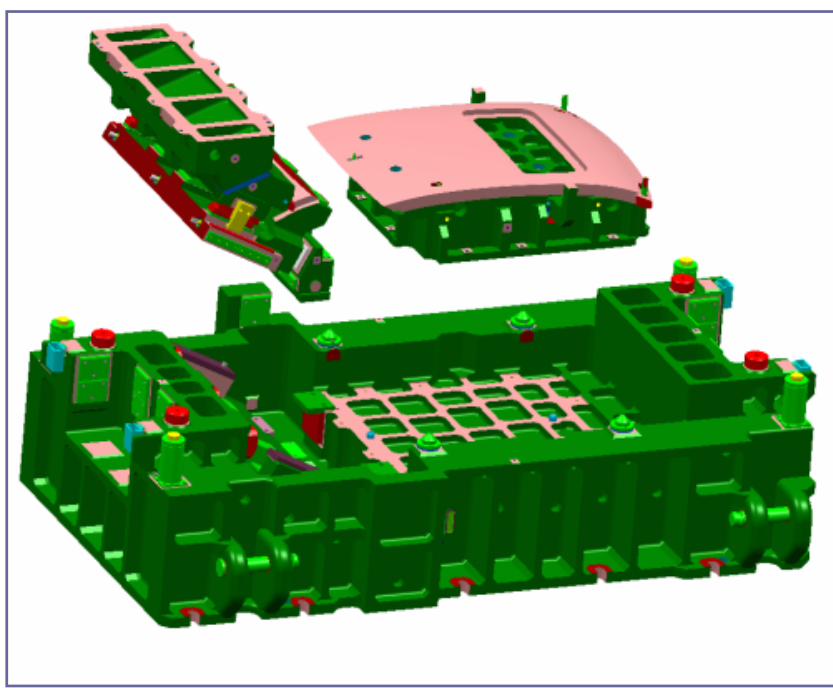
Design of cubings, master blocks, data control models, locating fixtures for measuring the body components, the groups of welded body, fixtures for location and measurement of lining parts. The targeted implementation of those products is in the area of quality of pre-production and production phases of the automotive industry.

The Design Office of DYTRON s.r.o. develops a draft design and after its approval, a detailed design, followed by preparation of CAD data for NC machining, layout analysis and creation of drawing documentation.



Pressing tools:

In collaboration with a production plant or firm, we are capable to design pressing tools according to the layout developed in advance, to perform shape corrections of the areas for simulation of individual pressing operations, to generate a detailed design of a tool according to the customer standards and to develop production documentation and organize preparation for NC production.

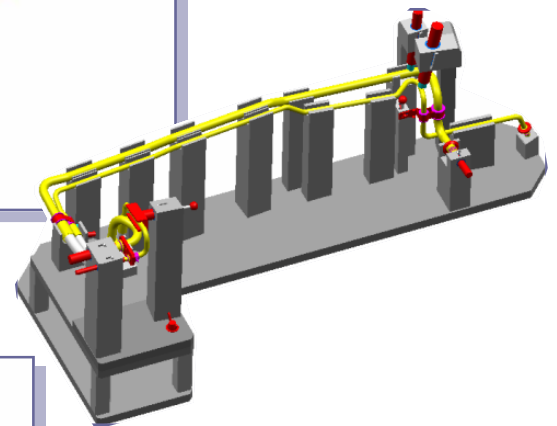
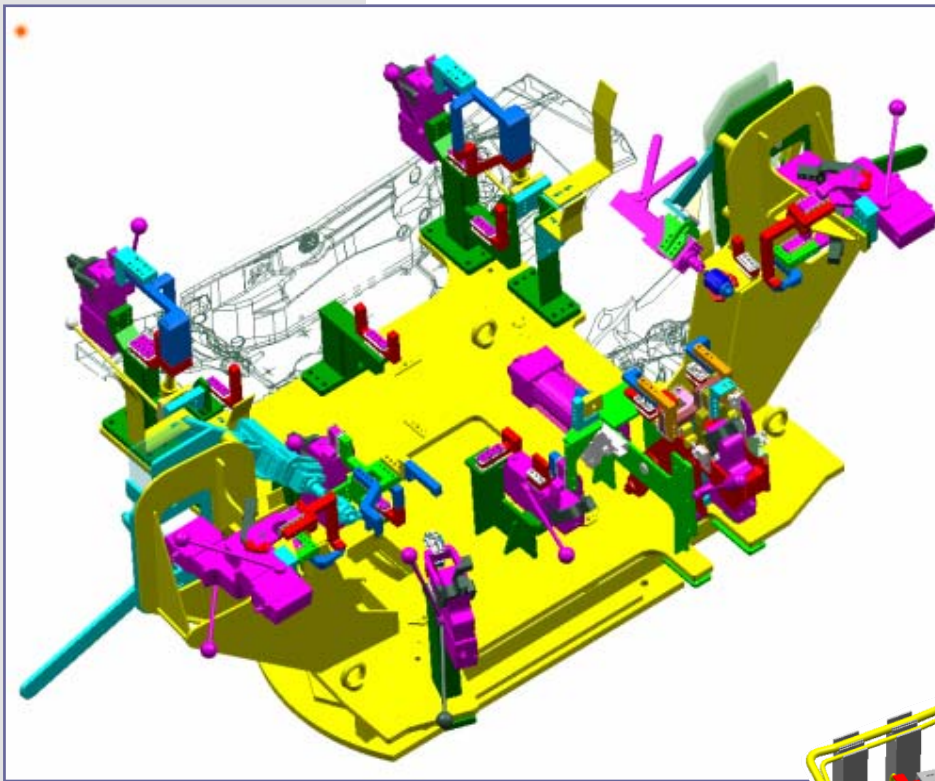


TYPES OF DESIGN ACTIVITIES

Welding fixtures and other tools

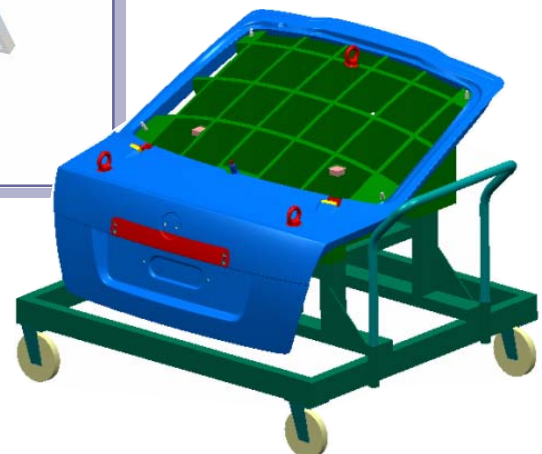
(for example fixtures for handling, testing, warehousing, etc.):

The Design Office of DYTRON s.r.o. performs project designs of welding stations of individual technological welding operations while using standard customer parts and following their approval, a detailed design and development of the drawing documentation including the preparation of CAD data for NC machining.



Other activities:

Apart from the professionally oriented design activity, the Design Office of DYTRON s.r.o. also offers a free capacity for modelling of areas, creation of solid bodies and development of the drawing documentation in the system CATIA V.4 and V.5 according to the customer requirements.



COLLABORATION WITH CUSTOMER

Performed design activities and prices billed for them depend on several factors (for example the total time of collaboration, a place where the design activities are performed, skills of a designer, etc.) We mainly differentiate the following types of collaboration:

Activities at the premises of the client:

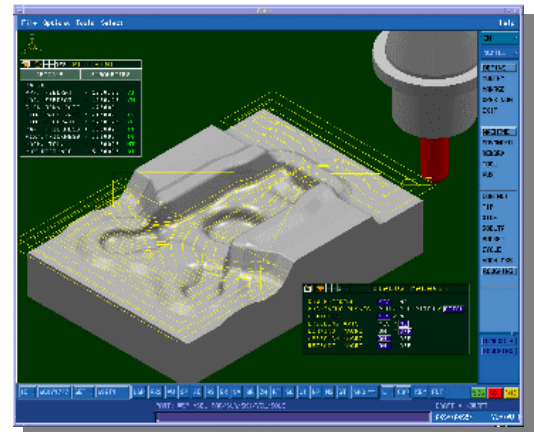
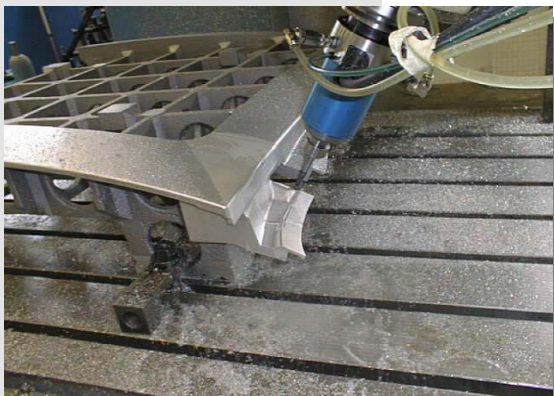
Both using the systems of DYTRON s.r.o.
Or the systems of the client.



Activities at the place of business:
The Design Centre in Nový Jičín.

PRODUCTION ACTIVITY

While providing overall services for our customers, apart from design activities, we also organise precise machine production. We build precise machine equipment and production fixtures including handling tools, if required, which complement overall delivery. Production of tools has been organised in co-operation with tool rooms equipped with advanced CNC technologies in the area of cutting and cutting-free machining. The programmes for the co-operated CNC technologies can be also developed by our staff in our CAD/CAM systems. Check of products is performed in tool rooms with 3D measuring devices.



The conditions of measurement and development of control reports are always agreed with the customer in detail. At measurement of majority of our products the Reference Point System is applied while the points clearly determine positions in the system of co-ordinates and at their measurement they ensure harmonisation of the CAD model and the product being checked.

In case of receiving a job as a whole package, it is self-evident that we guarantee product quality not only in terms of its design, but

also concerning quality of its production.

DYTRON s.r.o.

Na Valech 411/1, 741 01 Nový Jičín,
Czech republic

Tel.: +420 556 704 545

Fax: +420 556 704 747

E-mail: dytron@dytron.cz

<http://www.dytron.cz>